



A Cavagna Group Company

PRODIGI



Ultrasonic Smart Gas Meter

A Game Changer for LPG & Natural Gas Marketers

- ⦿ Monitors consumption remotely
- ⦿ Provides a familiar customer interface similar to other utilities
- ⦿ Helps to optimize gas deliveries
- ⦿ Adds control to overall storage efficiency





Accuracy & Durability

Ultrasonic Flow Sensor

The Prodigy uses an innovative high-performance **ultrasonic sensor** by Panasonic, designed to accurately measure the volume of **LPG/Natural Gas**. By using a **static measurement technology**, without moving mechanical components that wear out over time, it guarantees:

- minimum pressure loss
- high level of accuracy

Stainless Steel Body

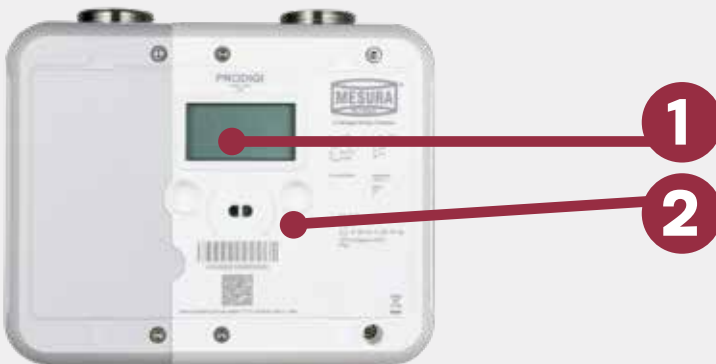
The Prodigy is a durable and safe solution. Its **IP65 protection grade** and the corrosion-resistant, fully welded, **stainless steel casing** ensure it can withstand the external agents.

Step-motor Valve

Thanks to the Prodigy's **step-motor valve** by Panasonic, located after the gas inlet, it is possible to **monitor customers' consumption** and, if necessary, **even shut off the gas supply remotely**. That eliminates the need to physically send a service technician to the location in order to manually shut off the gas flow. Remote gas metering enables gas companies to better plan their internal operations and manage interventions in an optimised way, allowing their employees to work more efficiently and safely.

Ultrasonic Gas Meter

Local User Interface



- 1 LCD Display screen with the volume displayed in cubic feet or meters to 3 decimals and with specific icons*.

*The list of icons is available on request

- 2 2 capacitive buttons to navigate through recorded values.

Right Button: To scroll through screens

Left Button: To activate specific functions



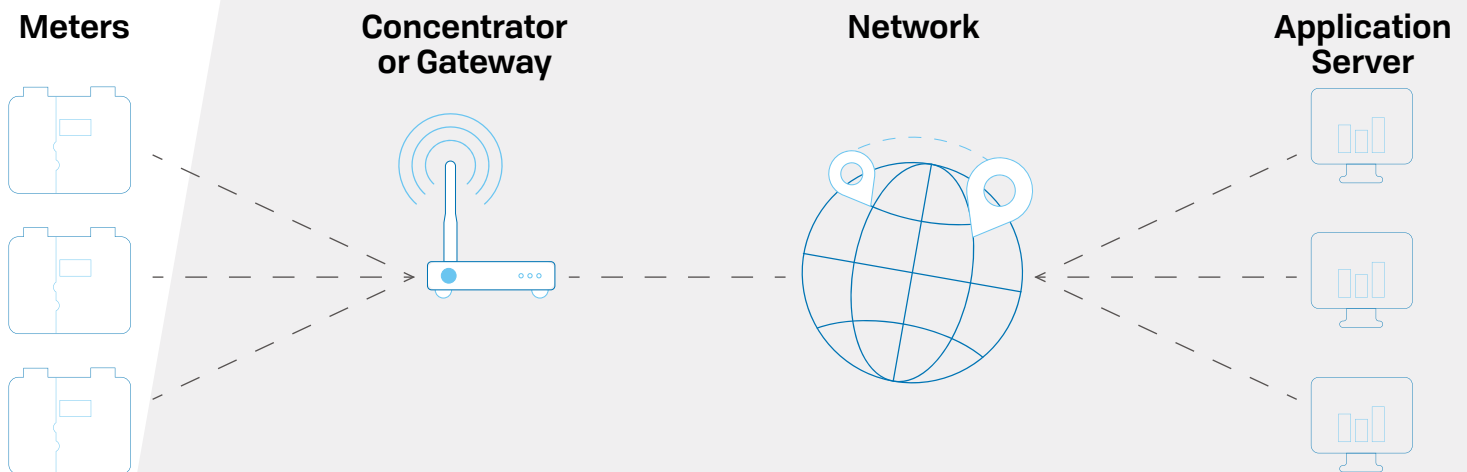
Communication

The Prodigy does not simply measure gas flow: its great flexibility and versatility are also expressed by its communication capabilities. Prodigy communicates data to the gas company, allowing to maximise its resources, and guarantee a reliable, accurate and efficient service.

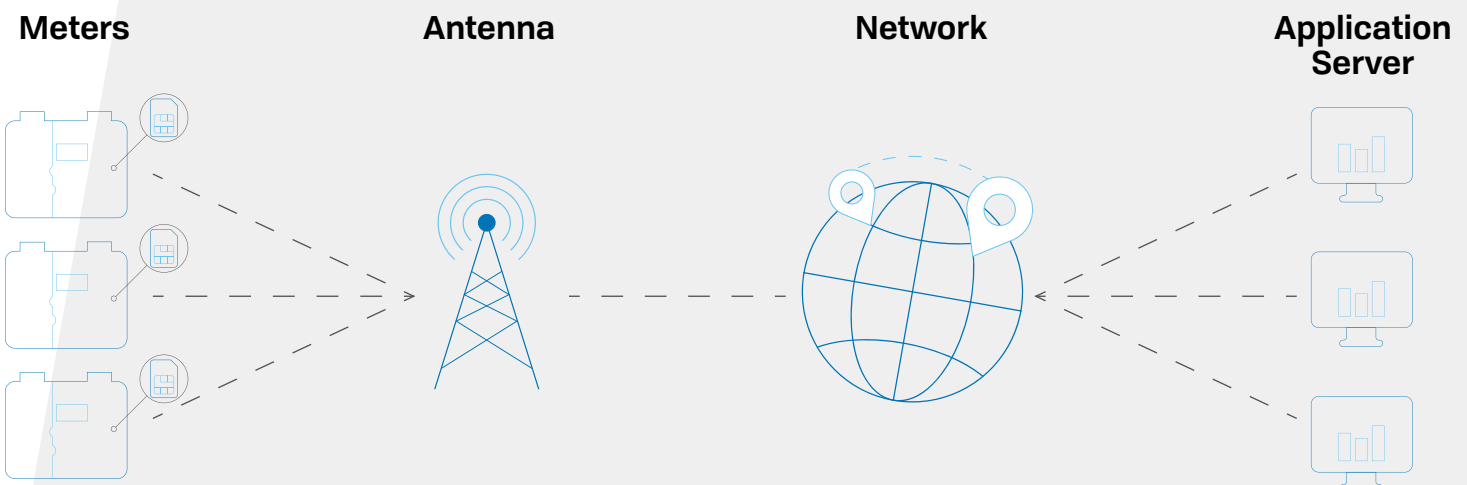
How does it work?

- 1) Gas Measurement.** The gas flow is measured as it passes through the ultrasonic sensor.
- 2) Values encryption.** The measured values are encrypted and decrypted by standard communication protocol through Device Language Message Specification (DLMS).
- 3) Data transmission.** The measurement signals are then stored until the Prodigy communicates the values to OTUS (Cavagna Group's asset management platform) using **RF 169 MHz, GPRS 2G, LoRaWAN, NB-IoT or LTE CAT-M Communication**. This data transmission happens electronically, without the need of someone physically reading the meter.

RF 169 MHz / LoRaWAN



GPRS 2G / LTE CAT-M / NB-IoT



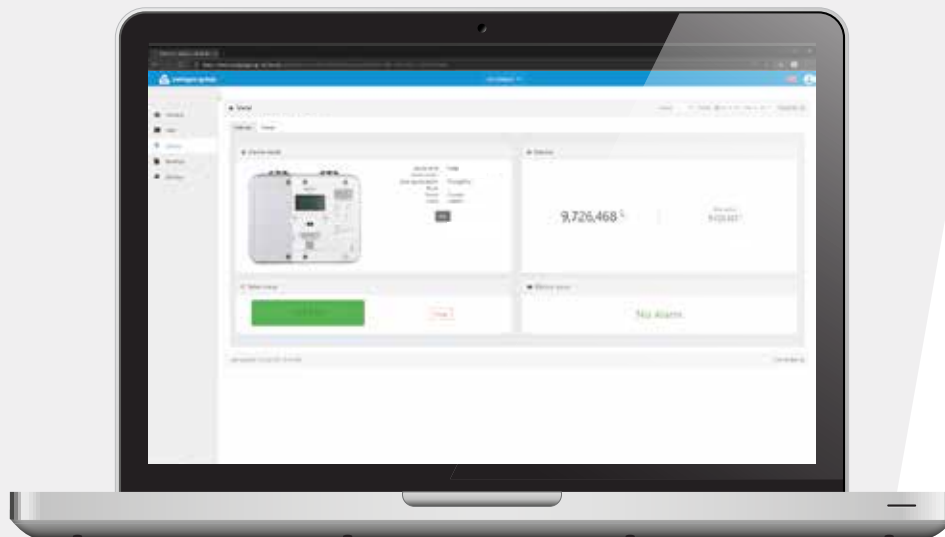
Otus

Powered by *webvision*

OTUS acts as a collection centre for all of the information that Prodigy is able to acquire and transmits in an **encrypted form**.

OTUS is a **cloud based platform** that allows you to:

- ⊙ Remotely close the shut-off valve
- ⊙ Automatically calculate the monthly consumption of each meter
- ⊙ Collect historical data of gas consumption
- ⊙ Create personalized reports and download them in either PDF or CSV format
- ⊙ Perform an analysis of historical consumption trends
- ⊙ Place the device in your own map

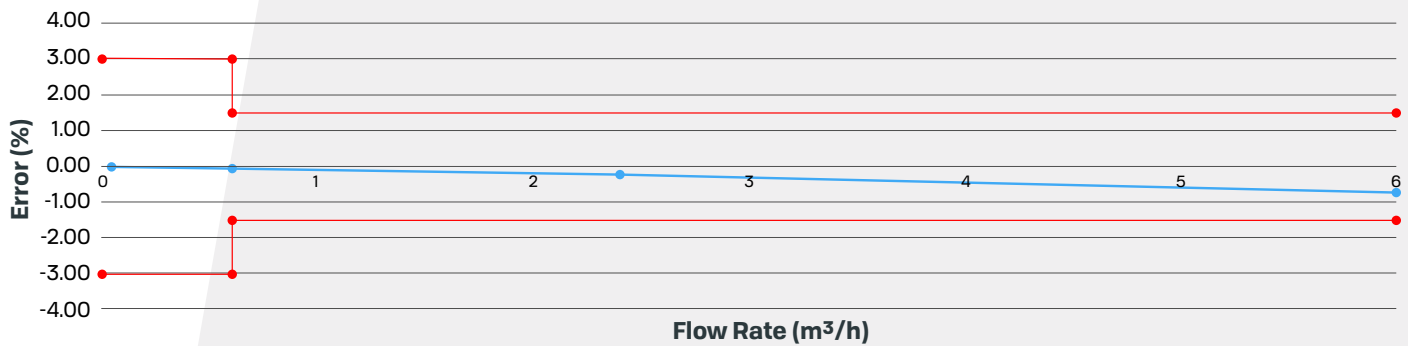


Easy remote monitoring thanks to the **Cavagna Group Digital Platform**

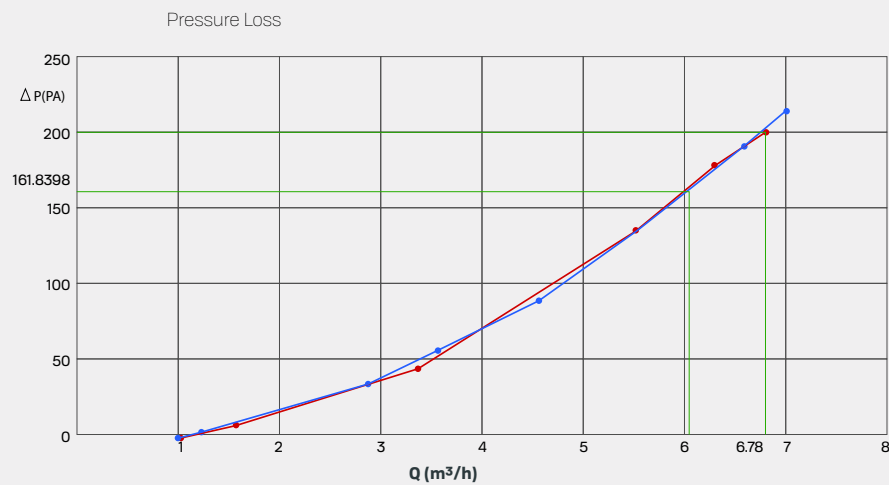
Ultrasonic Gas Meter

Performance Ultrasonic Smart Meter

Accuracy Curve



Pressure Loss Curve



Ultrasonic Gas Meter

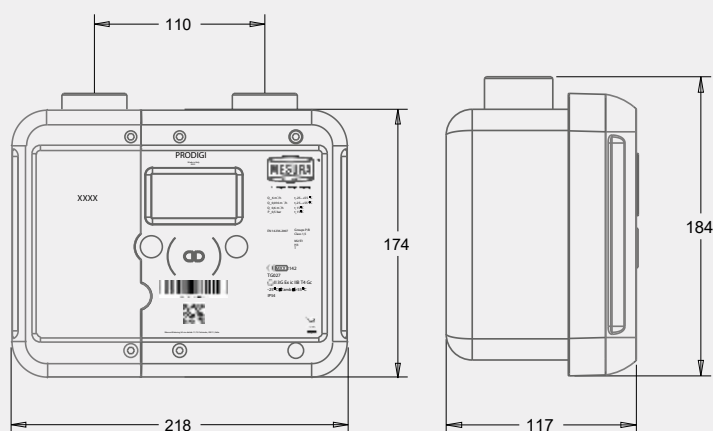
Technical Features

Accuracy Class	1,5	175
Capacity	0,016-6 m ³ /h (G1.6-G2.5-G4)	
Measuring Gas	LPG/Propane/Butane/Natural Gas	LPG/Propane
Maximum Operating Pressure	0,3 bar (LPG/Propane/Butane) - 0,5bar (Natural Gas)	4.35 psi (30 KPa)
Working Temperature	-25°C ÷ +55°C	13° F ÷ +125° F
Temperature at base conditions	15°C	60° F
Load Loss	≤ 2 mbar	≤ 0.03 PSI - ≤ 2 mbar (at 240 ft ³ /h)
Humidity	95%	
Connection threads	1"1/4 ISO 228**	20LT
Casing Material	Stainless Steel	
Protection Grade	IP65	NEMA-4
Local Interface	Infrared optical door ZVEI in accordance to norm EN 62056-21	
Communication Protocol	In accordance with UNI TS 11291-11/-12 DLMS/COSEM	available in UDP/TPC
Certification	ATEX - Zone 2 II 3G Ex ic IIB T4 Gc	UL Approved - Flammable Gas Meter
Batteries	1x Metrology battery 1x Communication battery	

*According to the working conditions

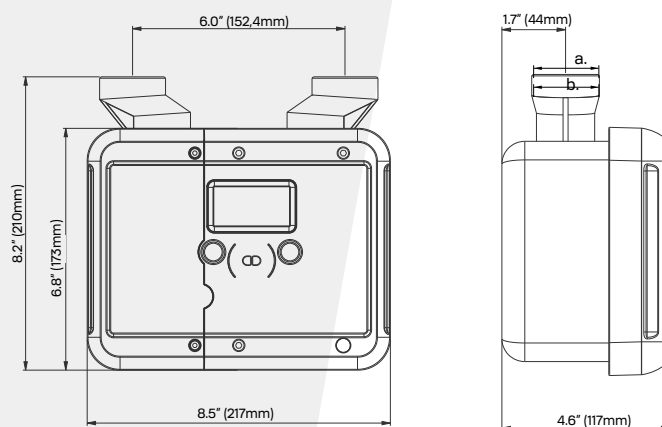
**Connectors available for 3/4" and 7/8"

Overall Dimensions



Weight: 2 kg

Other versions upon request



Threads Fittings: (a) USA version (LTE CAT-M/NB-IoT): 20LT
(b) UK version: 1" BSP



A Cavagna Group Company

4MM1842E – Rev.8.1 ENG – 04/25

Product Codes

Name	Gas Measured	Communication Protocol	Meter Class	Product Code
PRODIGO RF16	Natural Gas	RF 169 MHz (only for Italian market)	G1.6	99F3900004
PRODIGO RF25			G2.5	99F3900005
PRODIGO RF40			G4	99F3900006
PRODIGO GPRS		GPRS 2G	Extended Range*	99F3900007
PRODIGO GPRS16			G1.6	99F3900008
PRODIGO GPRS25			G2.5	99F3900009
PRODIGO GPRS40			G4	99F3900010
PRODIGO NBIOT		NB-IoT	Extended Range*	99F3900011
PRODIGO NBIOT16			G1.6	99F3900013
PRODIGO NBIOT25			G2.5	99F3900015
PRODIGO NBIOT40			G4	99F3900017
PRODIGO LORA1		LoRaWAN 868MHz- 915MHz	Extended Range*	99F3900012
PRODIGO LORA16			G1.6	99F3900014
PRODIGO LORA25			G2.5	99F3900016
PRODIGO LORA40			G4	99F3900018
PRODIGO RF GPL	LPG Propane Butane	RF 169MHz	Extended Range*	99F3900019
PRODIGO GPRS GPL		GPRS 2G	Extended Range*	99F3900003
PRODIGO LORA1 GPL		LoRaWAN 868MHz-915MHz	Extended Range*	99F3900020
PRODIGO NBIOT GPL		NB-IoT	Extended Range*	99F3900021
PRODIGO US1 LoRaWAN	LPG Propane	LoRaWAN 868MHz-915MHz	Extended Range*	99F3900024
PRODIGO US2 NB-IoT/ LTE CAT-M		NB-IoT / LTE CAT-M	Extended Range*	99F3900023
PRODIGO UK1	LPG	LoRaWAN 868MHz-915MHz	Extended Range*	99F3900032
PRODIGO UK2		NB-IoT	Extended Range*	99F3900034
PRODIGO UK3		GPRS 2G	Extended Range*	99F3900030

*Extended Range: flow rate from 0.016-6 m³/h